

OPTIONAL FEATURES

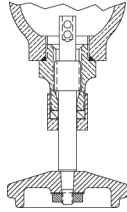
...FOR DEPENDABLE, PACKLESS SOLENOID VALVES

See Individual Options for Availability for Use with Specific Valve Types

BOTTOM MOUNTED OPTIONS Note: Only one Bottom Mount Option can be installed on each valve

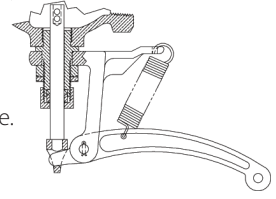
MANUAL OVERRIDE

(Normally Closed valves only)
(Designated by Prefix "MO")
Enables manual opening of solenoid valve during power failure or to override automatic controls.



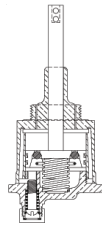
LEVER

(Normally Closed valves only)
(Designated by Prefix "LV")
Enables rapid opening of solenoid valve. Can be chain operated for use at inaccessible locations.



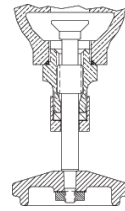
DASHPOT

(Designated by Prefix "DP")
Furnished for clean liquids to reduce water hammer effect sometimes encountered in long pipe runs by slowing valve closing.



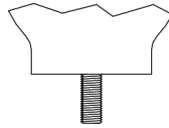
FLOW CONTROL

(Normally Closed, NR & MR valves, only)
(Designated by Prefix "FC")
Provides a manual method of reducing or throttling the flow.



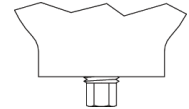
MOUNTING STUD

(Designated by Prefix "MS")
3/8"-16 thread can be furnished in bottom of body to facilitate mounting on bracket. (Not available on 2", 2-1/2" and 3")



DRAIN

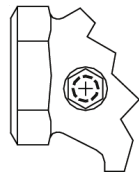
(Normally Closed, NR & MR valves, only)
(Designated by Prefix "DR")
1/4" NPT plug supplied in bottom of valve to facilitate draining of liquid.



OTHER OPTIONS

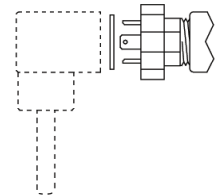
PILOT TAP

(Designated by Prefix "PT")
Type D, G & GR Valves can be furnished with 1/8" tapped hole for pilot connection or pressure gauge.



DIN CONNECTOR

(Designated by Suffix "DN")
Provides 3 prong Male connector for easy power connect / disconnect. Not available for Explosion-Proof.



"HUM FREE": (No AC Hum/Buzz)

(Designated by Suffix "HF") – The "HUM FREE" option eliminates the "AC hum" associated with AC operated solenoid valves. Enables valves to be used where an AC hum would not be acceptable and AC is the only power source available. IE: Hospitals, labs, schools (class rooms), homes, office environments etc. & when 24 vac is required for 40 series valves.

Leak / Dead Tight:

(Normally Closed valves only)
(Designated by Suffix "LT") – The Leak / Dead Tight Option offers 'soft' resilient seating or 'gapless' seal for low pressure applications 60 PSI or less. Consult Factory for Max. Diff. Pressure and Valve Type availability.

Flanged Ends for Bronze and Stainless Steel Valves:

(Designated by Suffix "F1" for 150 lb or "F3" for 300 lb Flanges) – F1 or F3 Flanged ends available on all stainless steel valves. F1 Flanged ends available on bronze valves.

Explosion-Proof and Watertight Solenoids:

(Designated by Prefix "F") – are Explosion-proof and NEMA 4X, 7C & D, 9E, F & G suitable for use in hazardous locations requiring Class I, Div. 1 & 2, Groups C & D & Class II Groups E, F, and G equipment.

NEMA 4X:

(Designated by Prefix "E") – are suitable for use in locations requiring a NEMA 4X designation. Zinc Plating replaces the standard paint used on the Coil housing (cup and base). The additional corrosion protection satisfies NEMA 4X requirements.

Internal construction, pressure ratings, power consumption, and external dimensions are the same as for standard valves.

Nickel Plating:

(Designated by Suffix "NP") – Plating is 0.0005" Thick Meets Mil Spec. C26074

Universal Mount Valves For Mounting In Vertical Pipe Runs

(See page 28, Type "P" Valve)